

# TUFF FLOORS

INTERLOCKING VINYL  
FLOORS

## Installation & Maintenance Instructions

### **Tuff Floors (Africa) CC**

*42 Milne Street, Germiston  
P.O. Box 985 Germiston 1400*

***Phone: 011-873-1292 / 4674***

***Fax: 011-873-3328***

**[www.tufffloors.co.za](http://www.tufffloors.co.za)**

**[info@tufffloors.co.za](mailto:info@tufffloors.co.za)**



The Tuff Floors emblem and *Tuff-Seal* are Trade Marks of Tuff Floors Limited of the British Isles.  
International and national patents registered and pending. RSA Patent No. 98/11820

# THE TUFF-SEAL, PEDESTRA™ & PLASTI-LOCK FLOORS

## GENERAL INFORMATION

Your floor will provide many years of service if properly installed for your particular application. You will need to ensure that it is well maintained and looked after in order to protect your investment. Follow the instructions and don't hesitate to contact Tuff Floors at the address on the cover should you encounter any difficulties or have any queries.

### **CHOOSE THE RIGHT INSTALLATION METHOD TO SUIT YOUR APPLICATION.**

#### **1. LOOSE LAID INSTALLATION (Tuff-Seal, Pedestra & Plasti Lock)**

In some light traffic applications the flooring can be laid loose over a flat, firm and clean surface.

#### **2 LOOSE LAID INSTALLATION WITH JOINTS GLUED TOGETHER (Tuff-Seal & Pedestra )**

In some light traffic applications which may cause the interlock to unclip (i.e. dirty environments) or those requiring an improved liquid tight joint the interlock can be glued together, thus producing a homogeneous floor covering, which is still not affixed to the sub-floor. ( The glue used for this purpose is "Bokweld A66" manufactured by Pekay Group (Pty.) Ltd.

#### **3. INSTALLATION WITH FULL SPREAD ADHESIVE (Tuff-Seal, Pedestra & Plasti Lock)**

In most applications the floor should be installed with a suitable full spread adhesive. Examples of some conditions that would require this method of installation would be where there is:

- Pedestrian traffic
- One directional traffic
- Direct sunlight on the floors

#### **4. INSTALLATION WITH FULL SPREAD ADHESIVE, AND THE JOINTS GLUED TOGETHER (Tuff Seal, Pedestra )**

This method of installation is used in more demanding applications. The floor should be installed using a full spread adhesive together with the joints glued together.

Examples of such applications are:

- High Traffic areas
- Dirty environments
- Trolleys, rolling loads or turning wheels

**Note - The selection of the correct adhesives is very important.** Acrylic or polyurethane adhesives are the types generally used, with the polyurethane being the stronger of the two. Contact adhesives can damage the tiles if not used correctly. Job site conditions vary and we therefore recommend that you consult an adhesive manufacturer to make the correct choice. Manufacturers of such adhesives include Pekay Group (Pty.) Ltd. and Qualichem (Pty.) Ltd. of Gauteng, South Africa.

### **JOB SITE CONDITIONS**

These interlocking tiles are recommended for interior applications only. The areas to receive flooring should be weather-tight. The material must be climatized at room temperature for a minimum of 24 hours before starting the installation. Failure to climatize the tiles prior to installation may result in variances in tile size and difficulty in joining the interlock. Ensure that in any one area only tiles from the same batch number are used. Size and colour variations do exist between batches.

### **SUB-FLOOR PREPARATION**

Because of the interlocking system, only minimal sub-floor preparation is required or needed when the tile is installed in a **loose lay configuration**. It is not necessary to remove old paint, epoxy coatings, concrete sealers and/or curing compounds, oils, grease or other contaminants that normally must be removed. (Please note that the above does not apply when the floor is glued to the sub floor)

- Concrete floors should be smooth, rigid, flat and level.
- Wood sub-floors must be rigid, free from movement and have at least 500mm of well-ventilated air space below.
- Remove, grind/sand down any protrusions such as: nails, bolts or lumps in the sub-floor.
- Fill any large holes, voids or cracks.
- Sweep or vacuum floor to remove all dirt and debris.

# THE TUFF-SEAL AND PEDESTRA™ INTERLOCKING FLOORING SYSTEM

## JOINING THE TILES TOGETHER

### TOOLS REQUIRED

Hard, no bounce rubber mallet, or dead blow hammer  
Sharp Stanley knife  
Steel T-square  
Tape measure  
Pencil  
Masking tape  
Chalk line

### JOINING TILES TOGETHER

1. Lay tiles from left to right placing the finished edges of the tile next to the wall as shown in Figure A.
2. When installing each tile always place the finished edge on top of the tab edge, **taking care to line up the tabs at each corner in order to ensure the *Tuff-Seal* joining system is properly aligned.** (Fig B) This is ensure the seal is not damaged when hammering the tiles together.
3. Using a hard, no bouce, rubber mallet (or preferably a dead blow hammer), tap tiles together starting from the corner, working your way to the outside. (Fig C)
4. When installing the second and consecutive rows, line up the corner tabs at the centre and both ends (Fig.D). **(This line up procedure is important as hammering improperly lined up tiles will damage the Tuff-Seal joining system.)** Using a rubber mallet tap tiles together starting at the corner and working out to the end. (Fig. E)

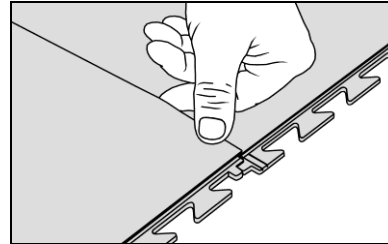


Figure B

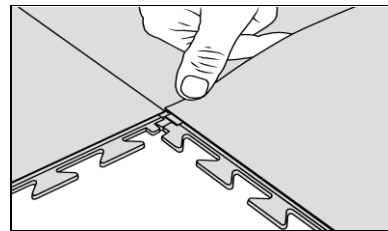


Figure D

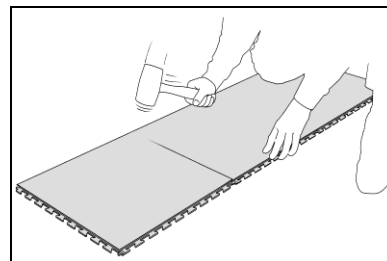


Figure C

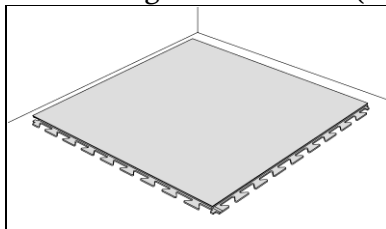


Figure A

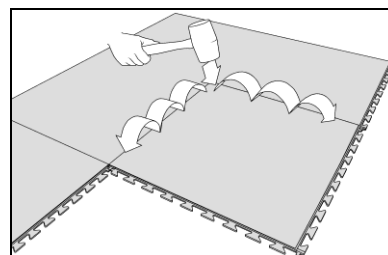


Figure E

# THE PEDESTRA™ INTERLOCKING FLOORING SYSTEM

## LAYING THE FLOOR

1. Identify the straightest wall in the room (Fig 1, AB).
2. Snap a chalk line at 90 degrees to this wall and a short enough distance from the other wall to allow for wastage and trimming.(Fig 1, CD)
3. Place the first tile (tile #1 in Fig 2) in the corner of the straight wall (Fig 2, AB) and the chalk line (Fig 2, CD) with the finished edge towards the corner and the dove tails facing out (Fig A).
4. Place four tiles in either direction along the chalk line and straight wall (Fig 3).
5. Place another three tiles (Fig 4) in the corner of the angle. Tiles 8,9,10.
6. Start filling in, by working diagonally across the room (Fig 5) Tiles 11, 12, 13, 14 until the room is completed.
7. Measure, trim and install the tiles around the perimeter of the room, leaving a 3mm expansion gap around the walls and fixed objects that are bolted to the floor.
8. Place a silicone sealant in these expansion gaps.
9. When complete, check all joints and tap in areas where the interlock has not properly clicked in.

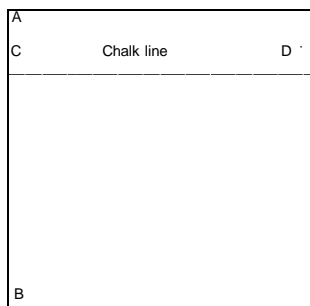


Figure 1

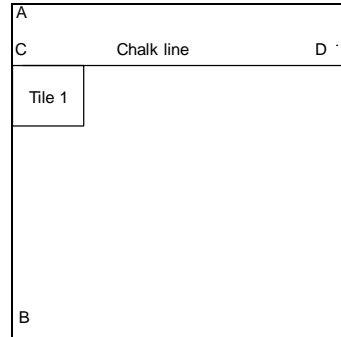


Figure 2

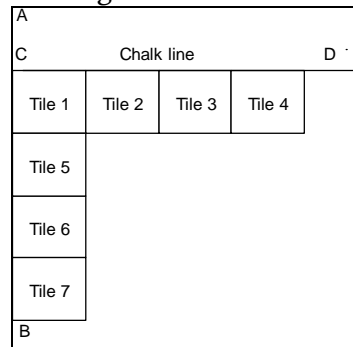


Figure 3

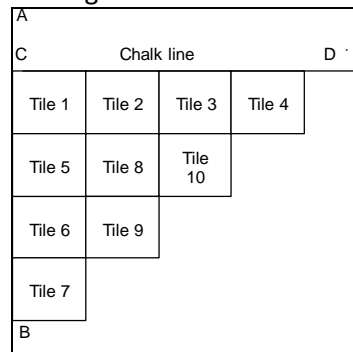


Figure 4

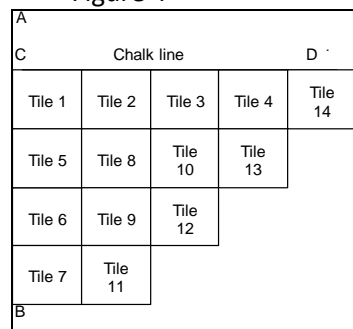


Figure 5

# THE PEDESTRA™ INTERLOCKING FLOORING SYSTEM

## FINISHING TOUCHES

### SEALING THE EDGES

If your application will leave an excessive amount of fluids on the floor, it is recommended to caulk the 3mm gap between the wall and tile using a polyurethane adhesive. To provide maximum expansion/contraction capabilities and to prevent the polyurethane adhesive caulk from adhering to the sub-floor, fix a 50mm wide masking tape tight to the wall around the perimeter of the room.

( Photo 1)

Install skirting so that it barely rests on top of the tile and does not restrict the tiles ability to expand and contract.

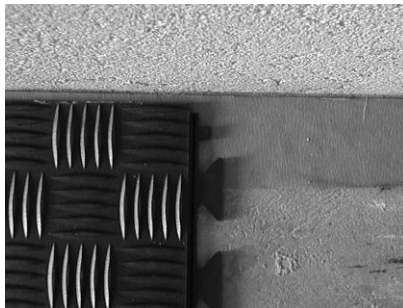


Photo 1



Photo 2

### INTERLOCKING RAMPS (PLASTI-LOCK ORIGINAL)

To fit the Plasti Lock Original ramp to a demarcation strip as per the garage kit, the ramps have markings at the back marked "A". Cut along these two lines and the two off cuts clip into the adjoining ramps and put together.

### RAMP TO TILE EDGE

Tuff Floors produces 30mm wide ramp to tile edge in a black or dark grey colour.

Trim tile to desired size, apply adhesive to the tile edge that slips underneath the tile, slide edging under tile and hand roll to ensure proper adhesive transfer.



Photo 3

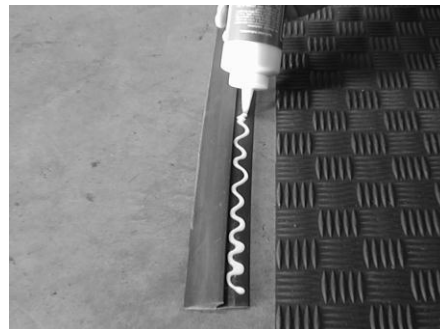


Photo 4

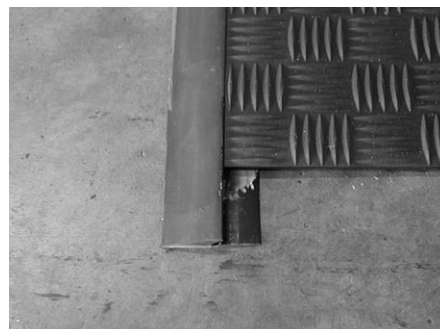


Photo 5

# MAINTENANCE INSTRUCTIONS

## INITIAL CLEANUP AND TREATMENT AFTER INSTALLATION

1. Remove all surface soil, debris, sand and grit by vacuuming.
2. Scrub the floor with a neutral pH (7-8.5) detergent.
  - Apply cleaning solution with a damp mop, then scrub with a **rotary scrubber** with soft nylon brushes, this tends to enhance the appearance of the floor, removing many visual imperfections.
  - Pick up solution with a mop or a wet vacuum.
  - Rinse with a damp mop & clean water (Do not apply too much water as the liquid can go underneath the tiles.)
3. Apply floor finish. ( If desired)
  - Apply 3-4 coats of high quality, commercial, acrylic floor finish.
  - Apply thinly with a clean finish mop or finish applicator.
  - Allow 30 minutes dry time between each coat.

NOTE: Acrylic floor sealer is difficult to apply to the checker plate pattern.

Suitable maintenance products are available from Wetrock of Randburg, Gauteng.

*PLEASE NOTE: Tuff Floors (Africa) does not warrant or guarantee any maintenance products or their performance.*

## DAILY/REGULAR MAINTENANCE

Remove all surface soil, debris, sand and grit by vacuuming.

## Option 1 – Dry maintenance method: (Preferred for checker plate pattern)

- Spray clean using a rotary machine (175-1500 rpm) with an appropriate pad and spray buff solution.

## Option 2 -- Wet maintenance method:

- Scrub or mop with neutral pH (7-8.5) detergent. If floor is exposed to grease or oil, use a degreasing detergent.
- Apply cleaning solution with a mop and bucket, scrub with a rotary scrubber with soft nylon brushes, this tends to enhance the appearance of the floor, removing many visual imperfections.
- Pick up solution with a mop or wet vacuum.
- Rinse with clean water and allow floor to dry.
- Rinse with a damp mop & clean water (Do not apply too much water as the liquid can go underneath the tiles.)

## Scrub and recoat of floor finish (when required)

- Dust mop to remove loose soil
- Heavy scrub using rotary scrubber and double strength of neutral pH (7-8.5) detergent.
- Pick up solution with a mop or wet vacuum.
- Rinse with clean water and allow to thoroughly dry.
- Apply 1-2 thin coats of floor finish following initial application procedures

## GENERAL MAINTENANCE POINTS

Spillages (oils or any liquids) should be mopped up immediately as prolonged exposure could damage the tiles or work its way underneath the tiles. This could damage the sub-floor or glue.

Exposure to Thinners, Turpentine, Methylated Spirits and Paraffin will have a chemical reaction to the tiles.